

G4 LOW AIR / DUAL THROW UNIT COOLER

EDEN[®]
The Cool Solution



EPC - High & Medium Temperature Application
Capacity: 2.2kW to 19.2kW

DEPC - High & Medium Temperature Application Dual Air Throw
Capacity: 4.4kW to 38.4kW

Low Noise Level: 49dB(A) to 52dB(A) at 1 meter

Effective Air Throw: 12m to 14m

G4 Low Air / Dual Throw Series Unit Cooler EPC / DEPC

General Features

EPC & DEPC are specially designed for Process Chiller room using the forced draught air flow for better air distribution. They operate at a low noise level of 49dB(A) to 52dB(A) which provide comfortable environment for the people working in the room.

Coils are designed with the Latest Smart Circuitry. It allows maximum massflow rate of refrigerant to be evenly distributed throughout the evaporator, maximizing coil efficiency thus providing higher efficiency and capacity with a smaller physical unit cooler dimension.

Copper Tubes are accordance with JIS. C12T. Inner Groove Tube (IGT) increases the internal coil surface, having a low oil film coefficient thus providing higher efficiency and capacity.

Casing comes in high quality powder coated Aluminum, according to AA 1100 Standard. Centre plates are built in to enhance air side performance and structural strength for models with 2 or more fans.

Fins are produced from high-grade Aluminum (Aluminum Association AA 1100 Standard) with Double Sine Wave Pattern and Rippled Fin Edges to provide higher heat transfer efficiency.

Fan Motors used in all the models are high quality German brand motors, fitted with thermistor motor protection and conform to DIN 40050 safety standards. Fan motors are of the highest quality offered in the industry ensuring long life and durability for both high and low temperature application.

Capacity Ratings are thermally guaranteed by Eden and tested in accordance to ASHRAE dry box standards.

Quality Assurance for all Eden products are designed, manufactured and tested in our factories that are ISO9001 certified.

One Year Warranty for all Eden Heat Exchanger products (Terms and conditions apply).

Options

- a) Copper-Fins Coil (Available only for 6FP to 12FP)
- b) Epoxy-Coated Aluminum Fin Coil (Only on large volume orders)
- c) Passivated Corrosion Protection For All Aluminum Fin Products
- d) Stainless Steel Casing
- e) CO₂ Application On Request
- f) Insulated Drip Tray (For Chiller Only)
- g) Defrost Heaters (For ET -10 °C to -1 °C)



G4 Low Air / Dual Throw Series Unit Cooler EPC / DEPC

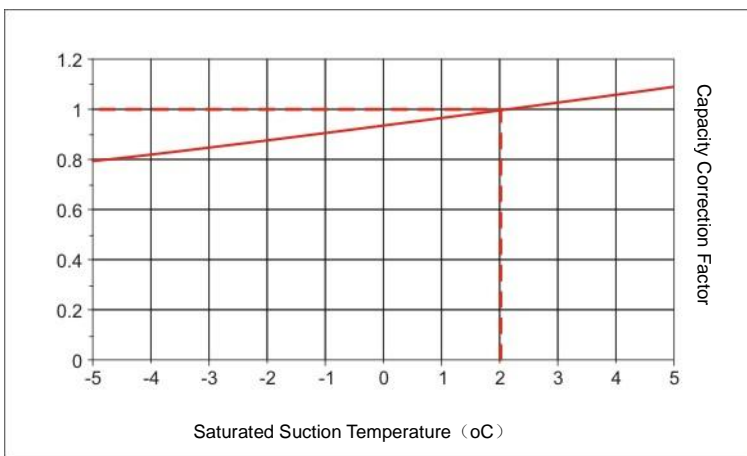
EPC - Low Air Series Unit Coolers Specifications

Air Defrost 5FPI Room Temperature +10°C

Model	Capacity R22				Fan Data								
	ASHRAE		EUROVENT SC1*		No. of 250mm Fan	Fan Motor			Fan Speed	Air Flow		Air Throw (m)	Noise Level dB(A)
	Watts	Btu/hr	Watts	Btu/hr		(V/Ph/Hz)	(Watts)	(Amps)	(rpm)	(L/s)	(m³/h)		
	8 KTD	14.4 FTD	10 KTD	18 FTD									
EPC 0220	2,200	7,506	3,416	11,654	1	230/1/50	45	0.21	1,410	306	1,102	12	40
EPC 0260	2,600	8,871	4,037	13,773	1	230/1/50	45	0.21	1,410	295	1,062	12	40
EPC 0320	3,200	10,918	4,968	16,951	1	230/1/50	45	0.21	1,410	286	1,030	12	40
EPC 0430	4,300	14,672	6,676	22,778	2	230/1/50	90	0.42	1,410	612	2,203	12	42
EPC 0540	5,400	18,425	8,384	28,605	2	230/1/50	90	0.42	1,410	590	2,124	12	42
EPC 0630	6,300	21,496	9,781	33,372	2	230/1/50	90	0.42	1,410	572	2,059	12	42
EPC 0700	7,000	23,884	10,868	37,080	3	230/1/50	135	0.63	1,410	920	3,312	13	44
EPC 0890	8,900	30,367	13,817	47,144	3	230/1/50	135	0.63	1,410	885	3,186	13	44
EPC 1040	10,400	35,485	16,146	55,090	3	230/1/50	135	0.63	1,410	860	3,096	13	44
EPC 1200	12,000	40,944	18,630	63,566	4	230/1/50	180	0.84	1,410	1,170	4,212	13	45
EPC 1370	13,700	46,744	21,269	72,571	4	230/1/50	180	0.84	1,410	1,130	4,068	13	45
EPC 1510	15,100	51,521	23,443	79,987	4	230/1/50	180	0.84	1,410	1,110	3,996	13	45
EPC 1760	17,600	60,051	27,324	93,229	5	230/1/50	225	1.05	1,410	1,430	5,148	14	46
EPC 1920	19,200	65,510	29,808	101,705	5	230/1/50	225	1.05	1,410	1,400	5,040	14	46

** Noise Level is stated at 3 m distance

Application & Correction Factor Guideline



Capacity Correction Factor

Refrigerant	Capacity Multiplier
R22	1.00
R407B	0.95
R407C	0.93
R134A	0.975
R404A	0.989
R507	0.989
R417A	0.91

Capacity Ratings & Conditions

All Eden Heat Exchangers are tested in Accordance to ASHRAE Dry Box Standard.
(Recommended for Asia Usage)

EUROVENT Data is used for Comparison Purposes

*EUROVENT Data is based on SC1 Nominal Capacity

SC1 Condition - Air Inlet Temperature = +10°C and Evaporating Temperature = 0°C

G4 Low Air / Dual Throw Series Unit Cooler EPC / DEPC

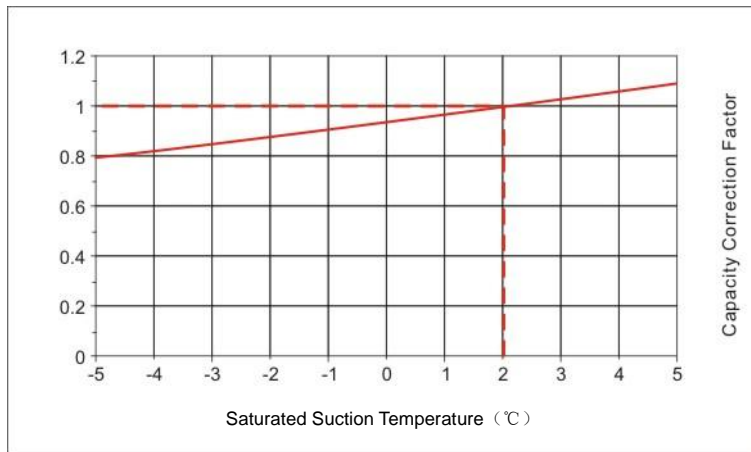
DEPC - Dual Throw Series Unit Coolers Specifications

Air Defrost 5FPI Room Temperature +10°C

Model	Capacity R22				Fan Data								
	ASHRAE		EUROVENT SC1*		No. of 250mm Fan	Fan Motor			Fan Speed	Air Flow		Air Throw (m)	Noise Level dB(A)
	Watts	Btu/hr	Watts	Btu/hr		(V/Ph/Hz)	(Watts)	(Amps)	(rpm)	(L/s)	(m³/h)		
	8 KTD	14.4 FTD	10 KTD	18 FTD									
DEPC 0440	4,400	15,013	6,831	23,307	2	230/1/50	90	0.42	1,410	612	2,203	12	42
DEPC 0520	5,200	17,742	8,073	27,545	2	230/1/50	90	0.42	1,410	590	2,124	12	42
DEPC 0640	6,400	21,837	9,936	33,902	2	230/1/50	90	0.42	1,410	572	2,059	12	42
DEPC 0860	8,600	29,343	13,352	45,555	4	230/1/50	180	0.84	1,410	1,224	4,406	12	45
DEPC 1080	10,800	36,850	16,767	57,209	4	230/1/50	180	0.84	1,410	1,180	4,248	12	45
DEPC 1260	12,600	42,991	19,562	66,744	4	230/1/50	180	0.84	1,410	1,144	4,118	12	45
DEPC 1400	14,000	47,768	21,735	74,160	6	230/1/50	270	1.26	1,410	1,840	6,624	13	47
DEPC 1780	17,800	60,734	27,635	94,289	6	230/1/50	270	1.26	1,410	1,770	6,372	13	47
DEPC 2080	20,800	70,970	32,292	110,180	6	230/1/50	270	1.26	1,410	1,720	6,192	13	47
DEPC 2400	24,000	81,888	37,260	127,131	8	230/1/50	360	1.68	1,410	2,340	8,424	13	48
DEPC 2740	27,400	93,489	42,539	145,141	8	230/1/50	360	1.68	1,410	2,260	8,136	13	48
DEPC 3020	30,200	103,042	46,886	159,973	8	230/1/50	360	1.68	1,410	2,220	7,992	13	48
DEPC 3520	35,200	120,102	54,648	186,459	10	230/1/50	450	2.10	1,410	2,860	10,296	14	49
DEPC 3840	38,400	131,021	59,616	203,410	10	230/1/50	450	2.10	1,410	2,800	10,080	14	49

* Noise Level is stated at 3 m distance

Application & Correction Factor Guideline



Refrigerant	Capacity Multiplier
R22	1.00
R407B	0.95
R407C	0.93
R134A	0.975
R404A	0.989
R507	0.989
R417A	0.91

Capacity Ratings & Conditions

All Eden Heat Exchangers are tested in Accordance to ASHRAE Dry Box Standard.
(Recommended for Asia Usage)

EUROVENT Data is used for Comparison Purposes

*EUROVENT Data is based on Sc1 Nominal Capacity

SC1 Condition Air Inlet Temperature = +10°C and Evaporating Temperature = 0°C

G4 Low Air / Dual Throw Series Unit Cooler EPC / DEPC

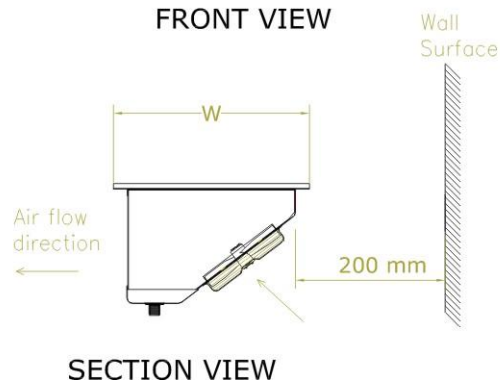
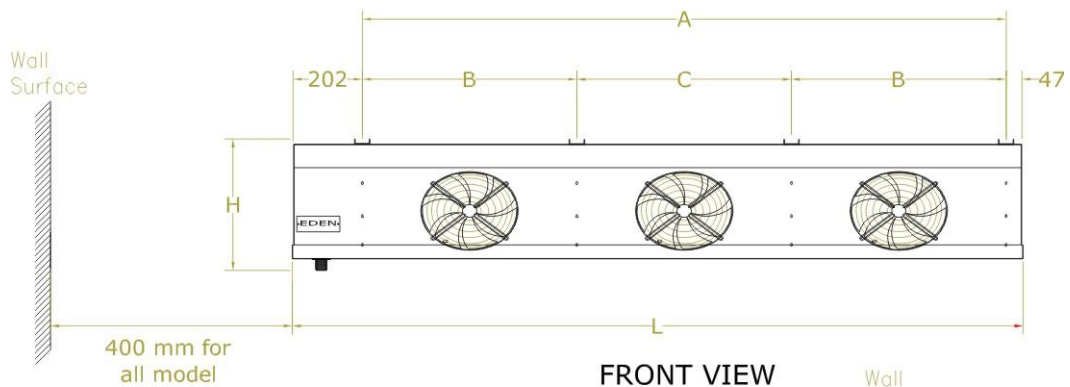
Technical Specifications

Model	Size (mm)									Weight (kg)*	Liquid Connection (mm)	Suction Connection (mm)	B.S.P 1" Thread Drain Pipe (mm)
	A	B	C	L	H	W	L*	H*	W*				
EPC 0220	626	-	-	875	384	572	1,025	550	720	40	12.7	22.2	25.4
EPC 0260	626	-	-	875	384	572	1,025	550	720	41	12.7	22.2	25.4
EPC 0320	626	-	-	875	384	572	1,025	550	720	42	12.7	22.2	25.4
EPC 0430	1,226	613	-	1,475	384	572	1,625	550	720	60	12.7	28.6	25.4
EPC 0540	1,226	613	-	1,475	384	572	1,625	550	720	62	12.7	28.6	25.4
EPC 0630	1,226	613	-	1,475	384	572	1,625	550	720	65	12.7	28.6	25.4
EPC 0700	1,876	625.8	625	2,125	384	572	2,275	550	720	81	12.7	28.6	25.4
EPC 0890	1,876	625.8	625	2,125	384	572	2,275	550	720	85	12.7	28.6	25.4
EPC 1040	1,876	625.8	625	2,125	384	572	2,275	550	720	88	12.7	28.6	25.4
EPC 1200	2,326	581.5	581.5	2,575	384	572	2,275	550	720	101	15.8	28.6	25.4
EPC 1370	2,326	581.5	581.5	2,575	384	572	2,275	550	720	106	15.8	28.6	25.4
EPC 1510	2,326	581.5	581.5	2,575	384	572	2,275	550	720	110	15.8	28.6	25.4
EPC 1760	2,776	555	555	3,025	384	572	3,175	550	720	123	15.8	28.6	25.4
EPC 1920	2,776	555	555	3,025	384	572	3,175	550	720	128	15.8	28.6	25.4
DEPC 0440	626	-	-	875	385	1,142	1,025	550	1,290	56	12.7	22.2	25.4
DEPC 0520	626	-	-	875	385	1,142	1,025	550	1,290	59	12.7	22.2	25.4
DEPC 0640	626	-	-	875	385	1,142	1,025	550	1,290	61	12.7	22.2	25.4
DEPC 0860	1,226	613	-	1,475	385	1,142	1,625	550	1,290	85	12.7	28.6	25.4
DEPC 1080	1,226	613	-	1,475	385	1,142	1,625	550	1,290	90	12.7	28.6	25.4
DEPC 1260	1,226	613	-	1,475	385	1,142	1,625	550	1,290	95	12.7	28.6	25.4
DEPC 1400	1,876	625	625	2,125	385	1,142	2,275	550	1,290	116	12.7	28.6	25.4
DEPC 1780	1,876	625	625	2,125	385	1,142	2,275	550	1,290	124	12.7	28.6	25.4
DEPC 2080	1,876	625	625	2,125	385	1,142	2,275	550	1,290	131	12.7	28.6	25.4
DEPC 2400	2,326	581.5	581.5	2,575	385	1,142	2,275	550	1,290	149	15.8	28.6	25.4
DEPC 2740	2,326	581.5	581.5	2,575	385	1,142	2,275	550	1,290	158	15.8	28.6	25.4
DEPC 3020	2,326	581.5	581.5	2,575	385	1,142	2,275	550	1,290	162	15.8	28.6	25.4
DEPC 3520	2,776	555	555	3,025	385	1,142	3,175	550	1,290	185	15.8	28.6	25.4
DEPC 3840	2,776	555	555	3,025	385	1,142	3,175	550	1,290	195	15.8	28.6	25.4

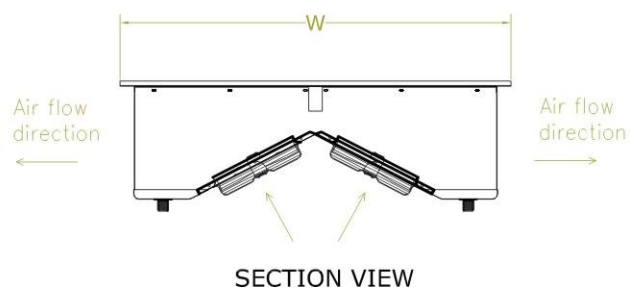
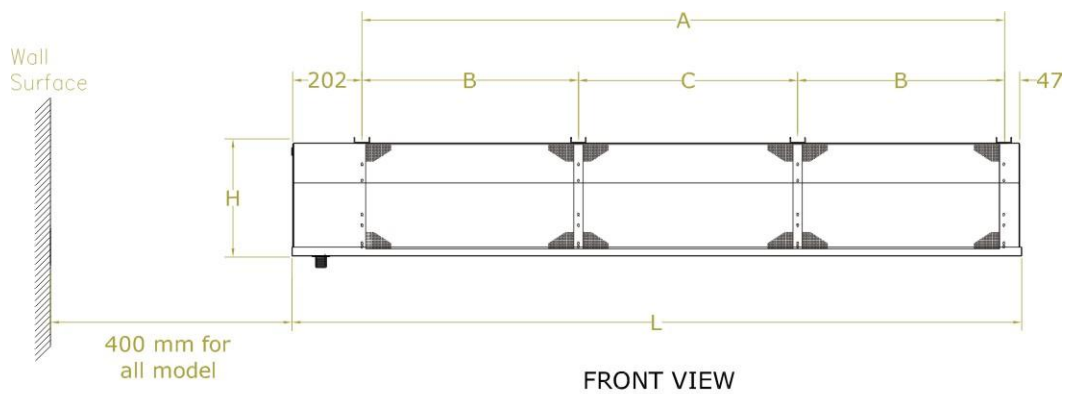
* Packed Dimensions/Weight

G4 Low Air / Dual Throw Series Unit Cooler EPC / DEPCS

INSTALLATION GUIDE FOR EPC



INSTALLATION GUIDE FOR DEPC



G4 Low Air / Dual Throw Series Unit Cooler EPC / DEPC

ADDITIONAL INFORMATION

Example:

Application: Meat Processing Room

Required Room Temperature: +12°C

Ambient: +35°C

Evaporating Temperature: +2°C at 10KTD

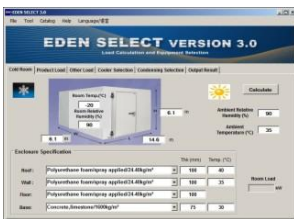
Cooling Capacity: 18kW with Dual Air-Throw capability (Not inclusive of the FCU load)

Type of Refrigerant: R134A

Selection of the Eden G4 Unit Cooler as follow:

1. Determine the Correction Factors and Multiplier (Refers to page 3):
 - a. Capacity Correction Factor is Approximately 1.00
 - b. Refrigerant multiplier = 0.975
2. Calculation of required capacity:
 - a. $18\text{kW} / 1 / 0.95 = 18.46\text{kW}$ (Not inclusive of the FCU load)
3. Determine the FCU load:
 - a. Fan load (6 fans model) = 0.27kW
4. Total capacity (Inclusive of FCU) required:
 - a. Required capacity = $18.46\text{kW} + 0.27\text{kW} = 18.73\text{kW}$
5. Hence a DEPC 2080 is the suitable unit cooler for the above application.

Eden Select:



The Eden Select software enables you to do a refrigeration heat load calculation and select the actual model for the unit cooler and condenser.



Eden Refrigeration Manufacturing
(Jiangsu)Co., Ltd.
Tel: (86)-519 8806 3222 Fax: (86)-51988063233
Email: edensolution@fareastref.com
www.edensolution.com.cn





Visit Us:

www.edensolution.com



AUTHORISED DEALER

Eden accepts no responsibility for possible errors in catalogues, brochures and other printed materials. Eden reserves the right to alter its products without notice. This also applies to products already on order provided that such alterations can be made without subsequential changes being necessary in specifications already agreed.